



2 bed terraced house to buy in

Union Road, Oswaldtwistle, Accrington,
Lancashire, BB5 3JB

£45,000 Starting Bid

 x 2  x 1  x 2

Tenure

Leasehold

On Street parking

Property features

- ✓ Being Sold via Secure Sale online bidding. Terms and Conditions
- ✓ Terraced property in a convenient location
- ✓ Perfect for first time buyers and investors
- ✓ Two reception rooms
- ✓ EPC Rating C

Key Information

- ✓ Council Tax: Band A
- ✓ EPC Rating: C
- ✓ Heating supply: Gas

Description

Welcome to this two bedroom terraced property in an excellent location close to both Accrington and Oswaldtwistle town centres.

This spacious property is a perfect for first-time buyers looking to create their own dream living space or for investor looking to expand their portfolio.

Situated in a sought-after location, this property offers easy access to public transport links, making commuting a breeze.

Nearby schools ensure that education is easily accessible for families with children.

Local amenities such as shops, restaurants, and recreational facilities are also within close proximity, providing convenience and entertainment.

This property might be suitable for change of use as a commercial property subject to consent from the local council being well positioned on Oswaldtwistle High Street and possessing A5 consent in 2017

Council Tax Band: A

Tenure: Leasehold

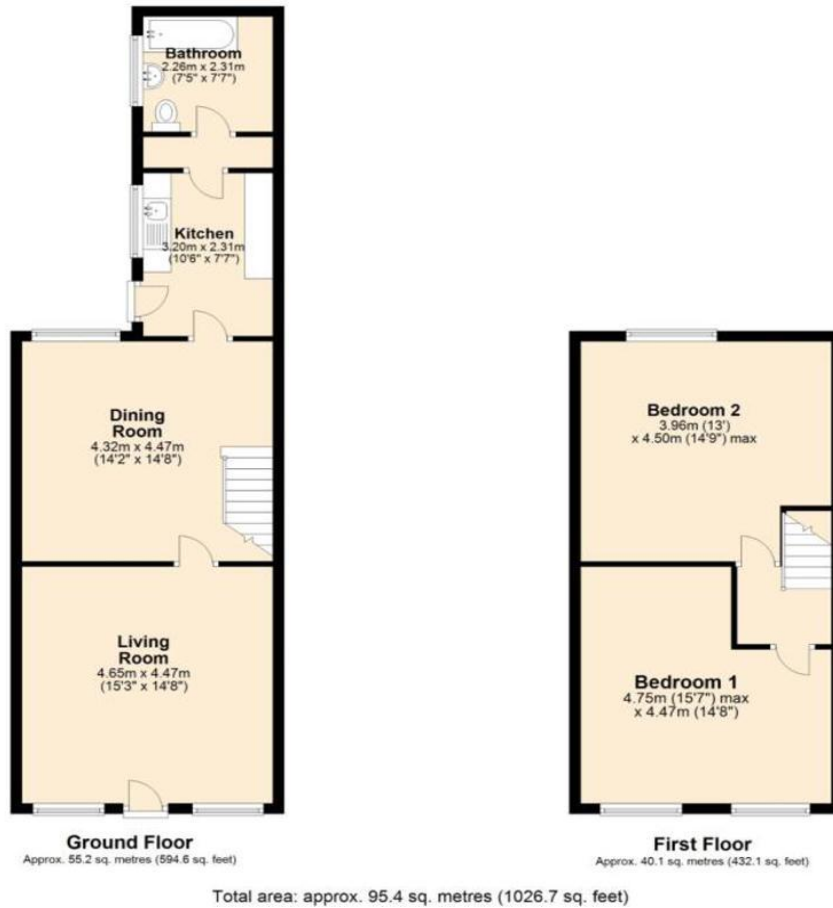
Length of Lease: 787

Price: Starting Bid £45,000

Property Type: Terraced House

Parking: On Street

Heating: Gas



Energy Efficiency Rating		
	Current	Potential
<i>Very energy efficient - lower running costs</i>		
(92-100) A		
(81-91) B		84
(69-80) C	69	
(55-68) D		
(39-54) E		
(21-38) F		
(1-20) G		
<i>Not energy efficient - higher running costs</i>		
England, Scotland & Wales	EU Directive 2002/91/EC	

Union Road, Oswaldtwistle, Accrington, Lancashire, BB5 3JB

Contact your local branch today for more information on this property:

1 Chapel Lane, Pinner, Middlesex, HA5 1AA, Tel: 0208 866 0000, <http://www.gibbs-gillespie.co.uk>

These particulars, whilst believed to be accurate are set out as a general outline only for guidance and do not constitute any part of an offer or contract. Intending purchasers should not rely on them as statements of representation of fact, but must satisfy themselves by inspection or otherwise as to their accuracy. No person in this firm's employment has the authority to make or give any representation or warranty in respect of the property.

